

RESTAURANT NIGHT

WRITTEN BY ELLA TAYLOR BLISS

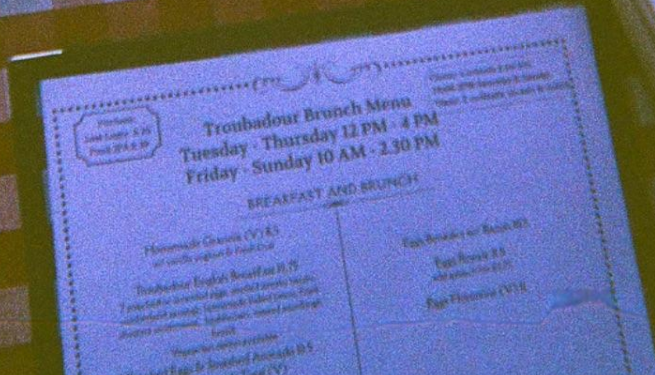




TABLE OF CONTENT

SYNOPSIS

THE WORLD

TONE

CAMERA

CHARACTERS

RELATIONSHIP DYNAMICS

ARTISTIC STATEMENT

LOCATION

A man and a woman are seated at a round, light-colored table in a restaurant. The man, on the left, has dark hair and is wearing a light-colored shirt. The woman, on the right, has long blonde hair and is also wearing a light-colored shirt. They are both looking towards each other, creating an intimate atmosphere. On the table, there are some small white cups and a dark tray. The background is dark and out of focus, suggesting a restaurant setting with patterned upholstery.

SYNOPSIS

RESTAURANT NIGHT IS ABOUT SEEMINGLY SMALL HUMAN MOMENTS, AN EXPLORATION OF CONNECTION BASED ON THE WRITER'S LIVED EXPERIENCES. THE FOUR PHASES OF LOVE INTERTWINE THROUGH A CAST OF HEARTFELT CHARACTERS, ALL BROUGHT TOGETHER BY AN ECLECTIC, MISMATCHED RESTAURANT.

IT NAVIGATES THE FOUR PHASES OF LOVE—MESSY, UNFILTERED, AND DEEPLY HUMAN. BEYOND ITS MESSAGE, THE FILM'S AESTHETIC IS EXACTLY WHAT PEOPLE CRAVE—BOLD, AVANT-GARDE, AND UNAPOLOGETICALLY STYLISH. ARTISTS LIKE CHAPEL ROAN PROVE THAT AUDIENCES WANT SOMETHING DARING AND REAL. 'RESTAURANT NIGHT' DELIVERS THAT—BODACIOUS, HONEST, AND IMPOSSIBLE TO IGNORE.



THE ATMOSPHERE / WORLD

“THE RESTAURANT IS COZY. THERE'S A FIREPLACE BY A TALL WINDOW THAT REFLECTS THE FULL MOON. IT LOOKS LIKE AN ECCENTRIC LIVING ROOM WITH TOO MANY MISMATCHED TABLES AND CHAIRS. THERE'S SOMETHING ENDEARINGLY EUROPEAN ABOUT IT ALL. THE QUIET HUM OF CONVERSATIONS FROM EVERYONE BLENDS TOGETHER INTO AN EASY BACKGROUND NOISE. THIS RESTAURANT EXISTS OUTSIDE OF TIME”



CHARACTERS / RELATIONSHIPS

SAM & JACK

ROCCO & ACE

ENGLISH LADY & MAN

GOTH 1 & 2

HIP WAITRESS & FRENCH LADY



SAM & JACK

SAM AND JACK AS A COUPLE REPRESENT THE LAST PHASE OF LOVE (PHASE 4): A "HIGHER LOVE" BUILT ON MUTUAL RESPECT, UNDERSTANDING, AND EMPATHY. THEY'VE LEARNED TO FACE CHALLENGES THOUGHTFULLY, EVEN WHEN UPSET, AND THEIR LOVE IS HONEST AND SELFLESS. JACK IS NATURALLY SUCCESSFUL AND EASYGOING. A MAGNETIC TYPE THAT PEOPLE ARE DRAWN TO. SAM IS CALM AND KIND. SHE'S SOMEONE THAT PEOPLE TRUST EASILY. TOGETHER, THEY SHARE A GENUINE CONNECTION THAT GOES BEYOND ROMANCE.

SAM'S MOTTO: "THE TRUTH SETS US FREE"

JACKS MOTTO: "EVERY CHOICE SHAPES WHO YOU ARE"



ROCCO AND ACE (PHASE 3)

ROCCO AND ACE ARE NOW IN THE THIRD STAGE OF LOVE. THE HONEYMOON PHASE IS OVER, AND THEY'RE FACING A POWER STRUGGLE. A CONFLICT WHICH WILL DETERMINE WHETHER THEY DRIFT APART OR, COME BACK TOGETHER EVEN STRONGER WITH NEW LESSONS LEARNED. ROCCO IS A FEELER—IMPULSIVE, EXCITABLE, AND SOMETIMES RASH. ACE IS A THINKER, DEEPLY THOUGHTFUL BUT OFTEN DISTANT. BOTH ARE STILL LEARNING HOW TO NAVIGATE A RELATIONSHIP. THEY LOVE EACH OTHER DEEPLY, BUT THEIR JOURNEY IS STILL UNFOLDING, FULL OF LEARNING, GROWTH, AND DISCOVERY ABOUT THEMSELVES AND EACH OTHER.

ROCCO'S MOTTO: "A STORY IS NEVER FINISHED, ONLY REWRITTEN."

ACE'S MOTTO: "IT'S THE LITTLE THINGS THAT MAKE LIFE BIG."



ENGLISH LADY & MAN (PHASE 2)

ENGLISH LADY AND A MAN ARE ON THEIR SECOND DATE. SHE'S PRETTY, POISED AND SOMETIMES DETERMINES HER WORTH ON OTHER'S OPINIONS. MAN IS KIND, A BIT OF A PEOPLE PLEASER. INSTEAD OF CONFRONTING THE OBVIOUS LACK OF CHEMISTRY, MAN TRIES TO POWER THROUGH—UNTIL HE'S CAUGHT HALFWAY OUT THE BATHROOM WINDOW TRYING TO ESCAPE. THIS RELATIONSHIP EXPLORES THE PHASE IN WHICH THE INITIAL SEXUAL ATTRACTION HAS WORN OFF, AND WE ARE LEFT WITH A LACK OF CONNECTION.

ENGLISH LADY'S MOTTO: "YOU ARE WHO YOU SURROUND YOURSELF WITH."

MAN'S MOTTO: "IF YOU DON'T HAVE ANYTHING NICE TO SAY, DON'T SAY ANYTHING AT ALL."



GOTH 1 & GOTH 2 (PHASE 1)

GOTH 1 & 2 MEET AT THE START OF THE FILM. THEY'RE DRAWN TOGETHER BY AN UNDENIABLE ATTRACTION THAT HIGHLIGHTS THEIR SEXUALLY OPEN AND FREE-SPIRITED NATURE. GOTH 1 IS ENIGMATIC AND CREATIVELY OPEN-MINDED. WITH A SURPRISING WARMTH RESERVED FOR A SELECT FEW. GOTH 2 IS BOLD AND INTENSE, MAGNETIC AND CAPTIVATING. LOST IN THE RUSH OF THE HONEYMOON PHASE, THEIR LOVE IS PASSIONATE, PLAYFUL, AND ALL-CONSUMING. EACH GLANCE, EACH TOUCH, FEELS LIKE A SCENE FROM A MOVIE. IN THIS MOMENT, NOTHING ELSE MATTERS.

GOTH 1'S MOTTO: "PAY ATTENTION TO THE SIGNS."

GOTH 2'S MOTTO: "LIFE IS STRANGE—DRESS ACCORDINGLY."

The background is a collage of film stills. At the top left, a woman (likely from 'Hush') is shown in profile, looking down. In the top center, a man (likely from 'The French Lady') is shown from the chest up, looking directly at the camera. To the right, a woman in a white dress and dark vest (likely from 'The French Lady') is standing and looking to the side. At the bottom left, a close-up of a woman's face (likely from 'Hush') is shown, looking down. In the bottom center, a man in a blue uniform (likely from 'Hush') is shown from the waist up, looking down. At the bottom right, a woman with long dark hair (likely from 'The French Lady') is shown from the chest up, looking directly at the camera.

HIP WAITRESS & FRENCH LADY (PHASE 0)

HIP WAITRESS FINDS SOLACE IN MUSIC AND DAYDREAMS. ALWAYS IN HER OWN WORLD, SHE'S INDIFFERENT TO OTHERS' JUDGMENTS, CONTENT TO OBSERVE. EFFORTLESSLY COOL AND STYLISH, SHE MOVES THROUGH LIFE WITH RHYTHM AND INSTINCT. A SHARP WIT AND A QUIET PRESENCE.

MOTTO: "IF THEY DON'T LIKE IT, FUCK 'EM."

FRENCH LADY GREW UP IN NORMANDY, FRANCE. SHE ALWAYS DREAMT OF RUNNING AWAY— EVENTUALLY, SHE DID. QUIET BUT SELF-CONFIDENT, SHE CARRIES AN EFFORTLESS ELEGANCE SHE EATS AND DRINKS SLOWLY, SAVORING EACH MOMENT.

MOTTO: "SOMETIMES THE BEST WAY TO FIND YOURSELF IS TO LOSE YOURSELF SOMEWHERE NO ONE KNOWS YOUR NAME."

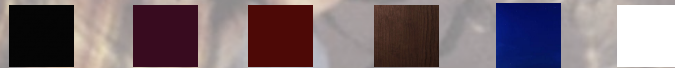
tone and colour palette

SERIOUS BUT COMEDIC,
ROMANTIC YET HEARTBREAKING
MELANCHOLIC AND HOPEFUL

HAND - HELD SHOTS, AN INSIGHT INTO REAL HUMAN EXPERIENCE.

WARM SUNSET, BLUE GLOW OF THE MOONLIGHT IN THE EVENING. THE CANDLES AROUND THE RESTAURANT CREATE AMBIENCE. A MYSTERIOUS BUT ROMANTIC FEEL.

COSTUME COLOR PALETTE:



16MM FILM LOOK

WHY 16MM?

WE WANT TO CAPTURE THE ESSENCE OF A TIME THAT NO LONGER EXISTS, OFFERING A NOSTALGIC ESCAPE IN AN ERA DOMINATED BY DIGITAL SCREENS. THE 16MM CAMERA ALLOWS US TO EMBRACE THE IMPERFECT BEAUTY OF FILM, CREATING A RAW, AUTHENTIC EXPERIENCE. ITS GRAINY TEXTURE AND TIMELESS FEEL PROVIDE A POWERFUL CONTRAST TO MODERN VISUALS, REMINDING AUDIENCES OF A PAST ERA. FOR A LOW-BUDGET PROJECT, 16MM GIVES US THE UNIQUE AESTHETIC OF FILM WITHOUT THE HIGH COST OF LARGER FORMATS, HELPING US MAKE A BOLD ARTISTIC STATEMENT WHILE KEEPING THINGS GROUNDED. WE AIM TO TRANSPORT VIEWERS TO ANOTHER TIME THROUGH THE NOSTALGIC POWER OF 16MM.

STILL EXAMPLES:





SHOOTING LOCATION

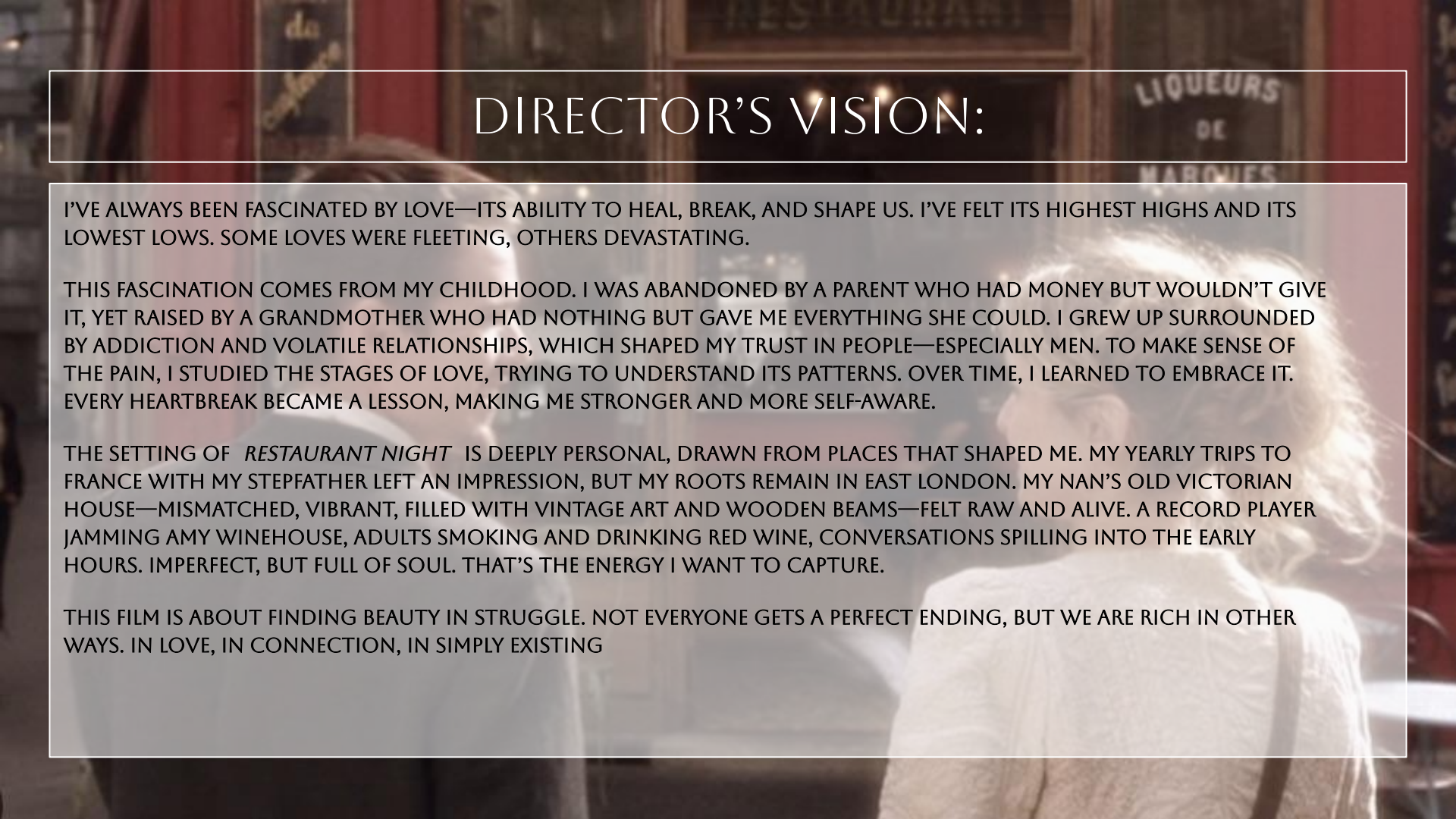
WALTHAMSTOW, EAST LONDON

SET

AMONGST OTHER HOUSEHOLD ITEMS THAT CAN BE USED, 'LITTLE MISMATCHED TABLES AND CHAIRS' WILL BE FORAGED FROM THE JUNKYARD AND SET TO CREATE THE WORLD OF 'RESTAURANT NIGHT'

STRUCTURE

THE BUILDING IS A THREE-STORY COMPLEX WITH STAIRS THAT MEANDER THROUGH THE CENTER. FOR TRACKING SHOTS FROM HIP WAITRESS'S BEDROOM INTO THE RESTAURANT, THIS LAYOUT ALLOWS US TO SEAMLESSLY SHOWCASE THAT SHE LIVES AND WORKS IN HER OWN ESTABLISHMENT. THE DESIGN ENABLES CONTINUOUS, FLOWING TRACKING SHOTS, CREATING A DYNAMIC VISUAL CONNECTION BETWEEN THE DIFFERENT LEVELS.



DIRECTOR'S VISION:

I'VE ALWAYS BEEN FASCINATED BY LOVE—ITS ABILITY TO HEAL, BREAK, AND SHAPE US. I'VE FELT ITS HIGHEST HIGHS AND ITS LOWEST LOWS. SOME LOVES WERE FLEETING, OTHERS DEVASTATING.

THIS FASCINATION COMES FROM MY CHILDHOOD. I WAS ABANDONED BY A PARENT WHO HAD MONEY BUT WOULDN'T GIVE IT, YET RAISED BY A GRANDMOTHER WHO HAD NOTHING BUT GAVE ME EVERYTHING SHE COULD. I GREW UP SURROUNDED BY ADDICTION AND VOLATILE RELATIONSHIPS, WHICH SHAPED MY TRUST IN PEOPLE—ESPECIALLY MEN. TO MAKE SENSE OF THE PAIN, I STUDIED THE STAGES OF LOVE, TRYING TO UNDERSTAND ITS PATTERNS. OVER TIME, I LEARNED TO EMBRACE IT. EVERY HEARTBREAK BECAME A LESSON, MAKING ME STRONGER AND MORE SELF-AWARE.

THE SETTING OF *RESTAURANT NIGHT* IS DEEPLY PERSONAL, DRAWN FROM PLACES THAT SHAPED ME. MY YEARLY TRIPS TO FRANCE WITH MY STEPFATHER LEFT AN IMPRESSION, BUT MY ROOTS REMAIN IN EAST LONDON. MY NAN'S OLD VICTORIAN HOUSE—MISMATCHED, VIBRANT, FILLED WITH VINTAGE ART AND WOODEN BEAMS—FELT RAW AND ALIVE. A RECORD PLAYER JAMMING AMY WINEHOUSE, ADULTS SMOKING AND DRINKING RED WINE, CONVERSATIONS SPILLING INTO THE EARLY HOURS. IMPERFECT, BUT FULL OF SOUL. THAT'S THE ENERGY I WANT TO CAPTURE.

THIS FILM IS ABOUT FINDING BEAUTY IN STRUGGLE. NOT EVERYONE GETS A PERFECT ENDING, BUT WE ARE RICH IN OTHER WAYS. IN LOVE, IN CONNECTION, IN SIMPLY EXISTING

WHY WE NEED YOUR SUPPORT

WE ARE POURING EVERYTHING WE HAVE INTO *RESTAURANT NIGHT*, BEING AS RESOURCEFUL AS POSSIBLE TO BRING THIS VISION TO LIFE. WE'RE SOURCING PROPS FROM JUNKYARDS, FILMING AT A LOCATION CLOSE TO HOME TO CUT COSTS, AND MAKING THE MOST OF WHAT WE HAVE. BUT SOME THINGS SHOULDN'T BE COMPROMISED—LIKE PAYING THE TALENTED ACTORS, CREW, AND OUR INCREDIBLE SOUND DESIGNER FOR THEIR HARD WORK AND DEDICATION.

YOUR SUPPORT WILL HELP US COVER ESSENTIALS LIKE FOOD ON SET, FAIR WAGES FOR OUR TEAM, AND THE RESOURCES NEEDED TO MAKE THIS FILM THE BEST IT CAN BE. INDEPENDENT FILMMAKING RELIES ON PASSION, BUT IT ALSO RELIES ON PEOPLE. WE WANT TO HONOR THEIR EFFORTS AND CREATE SOMETHING TRULY SPECIAL.

JOIN US IN BRINGING *RESTAURANT NIGHT* TO LIFE. LET'S MAKE SOMETHING RAW, BEAUTIFUL, AND UNFORGETTABLE—TOGETHER.

-ELLA TAYLOR BLISS, WRITER AND DIRECTOR.